

Place Progress Report

Report from North, Rugby and South Health and Wellbeing Board
Partnership's and NHS Place Executive's for Warwickshire Health
and Wellbeing Board,

21 September 2021



Warwickshire
Health and
Wellbeing



Warwickshire's population health framework

key drivers behind our new Strategy and its implementation:

The double impact of harm which disproportionately impacts on Black, Asian and Minority Ethnic (BAME) communities, and the most vulnerable individuals facing multiple deprivation and inequalities in health

An integrated recovery which looks across traditional organisational boundaries

Our long-term strategic ambitions:

People will lead a healthy and independent life.

People will be part of a strong community.

People will experience effective and sustainable services.

Place-based Health and Wellbeing Partnerships will work together to tackle health inequalities by addressing the wider determinants of health.

Health and social care commissioners and providers working together at our place-based Health and Care Executives to commission and deliver services.

The wider determinants of health

Our health behaviours and lifestyle

Aligning and coordinating prevention programs across the system and through each place-based Health and Wellbeing Partnerships to tackle barriers to healthy lifestyle choices.

An integrated health and care system

The places and communities we live in & with

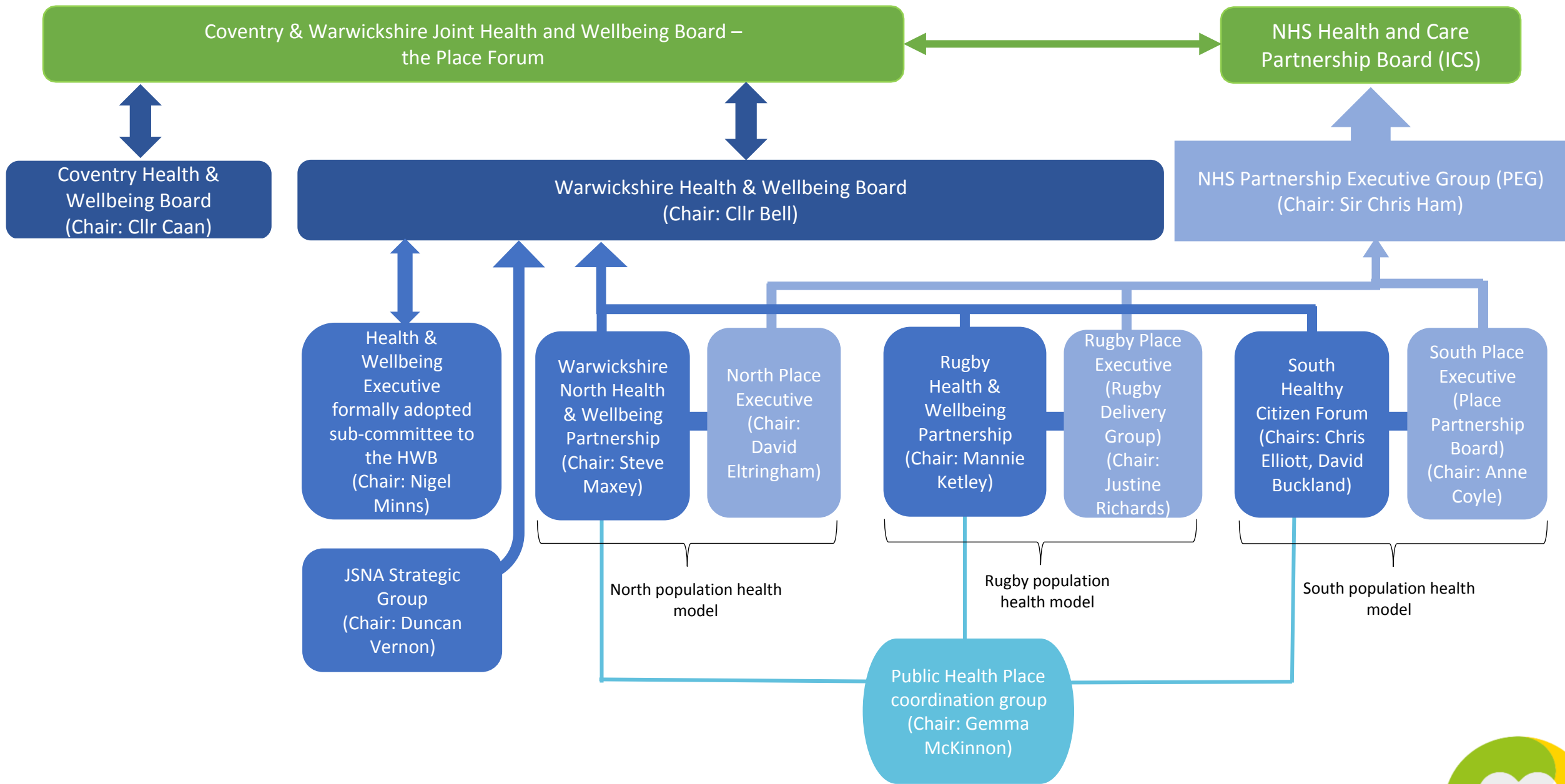
Working together in our place based Health and Wellbeing Partnerships and with our communities to mobilise solutions informed by our understanding of local assets

Our immediate focus:

Help our children and young people have the best start in life

Help people improve their mental health and wellbeing, particularly around prevention and early intervention in our communities

Reduce inequalities in health outcomes and the wider determinants of health



Responsible for developing and implementing action plans aligned to the HWS priorities and place-based JSNA. Focused on Quadrants 1-3: wider determinants, healthy behaviours, communities we live in an with. Secretariat provided by WCC Public Health

Responsible for developing and implementing action plans aligned to the HWS priorities and NHS place-based plans. Focused on Quadrant 4: integrated health and care.



Partnerships Forward Plan

- Ensure roadshow of key documents/plans
- Allows opportunity for input and comment from each place
- Approximate months given due to different frequency of meetings between places

Month	Proposed agenda items
July / Aug 21	Homelessness Strategy Mental health needs assessment (JSNA)
Sept /Oct 21	Health in All Policies and HEAT Creative Health Alliance Wellbeing for Life Tobacco Control BAME inequalities project Respiratory Diseases HEPP Project
Nov / Dec 21	Social Prescribing update <i>Update for HWB – progress on strategy priorities</i>
Jan / Feb 22	Dementia Strategy
Mar / April 22	Children 0-5 needs assessment (JSNA) <i>Update for HWB – progress on strategy priorities</i>



Warwickshire
Health and
Wellbeing



North Place

1. North population health framework
2. Progress on Partnership priorities
3. Governance arrangements for Partnership and Executive
4. North Place Project SITREP for September 2021
 - Place Executive priority view – wider determinants of health
 - Place Executive project view – wider determinants of health



Warwickshire
Health and
Wellbeing



North

Population Health Framework

Our long-term strategic ambitions:

People will lead a healthy and independent life.

People will be part of a strong community.

People will experience effective and sustainable services.

Place-based Health and Wellbeing Partnerships will work together to tackle health inequalities by addressing the wider determinants of health.

Health and social care commissioners and providers working together at our place-based Health and Care Executives to commission and deliver services.

The wider determinants of health

Our health behaviours and lifestyle

Aligning and coordinating prevention programs across the system and through each place-based Health and Wellbeing Partnerships to tackle barriers to healthy lifestyle choices.

An integrated health and care system

The places and communities we live in & with

Working together in our place based Health and Wellbeing Partnerships and with our communities to mobilise solutions informed by our understanding of local assets

Health and Wellbeing Partnership priorities

Access to services
Reducing health inequalities
Housing and health
Reducing obesity and improving lifestyles

Place Executive Priorities

Wider determinates of health
Long term conditions
Children and young people
Mental health
Urgent and emergency care
Community capacity / rapid response

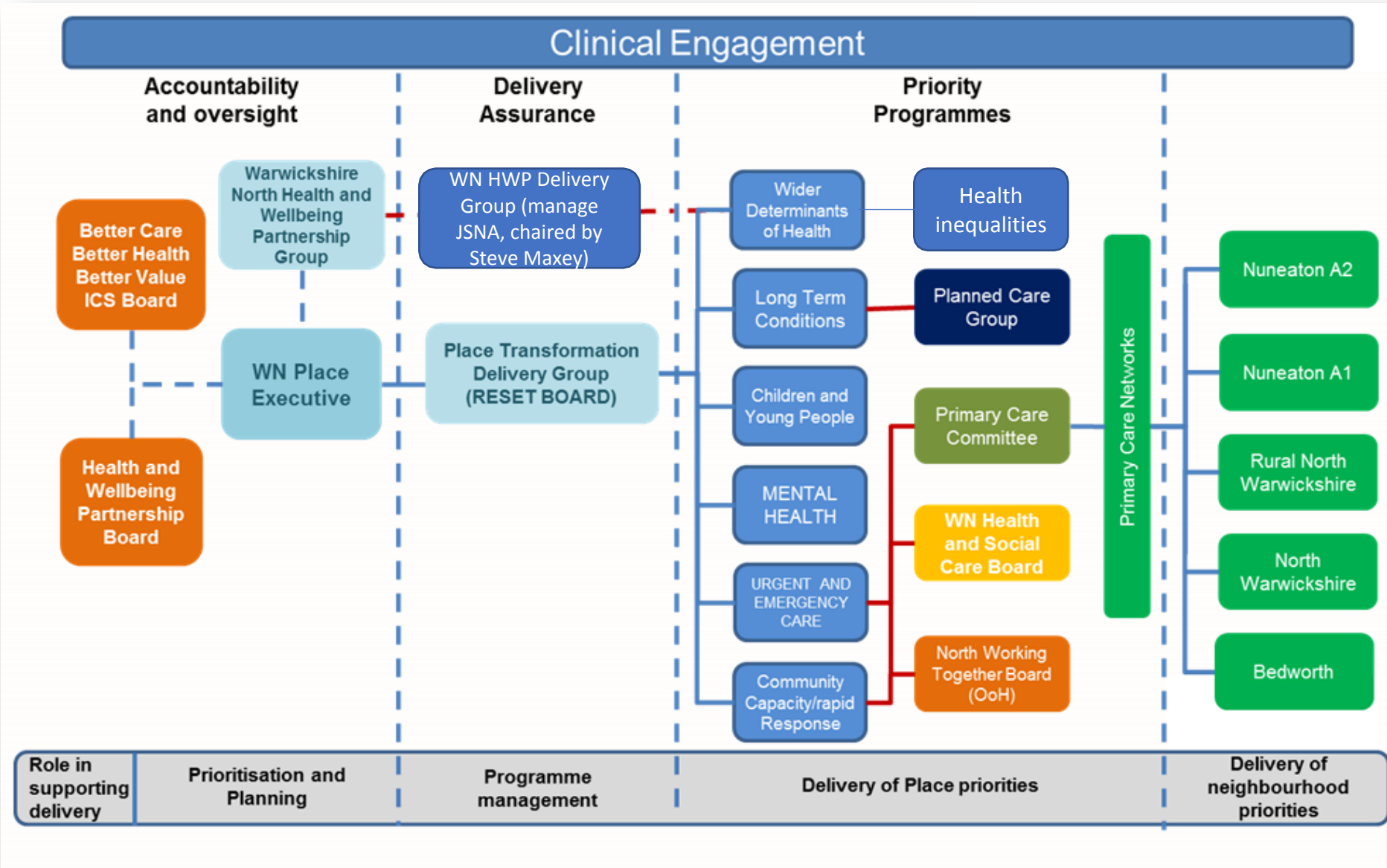
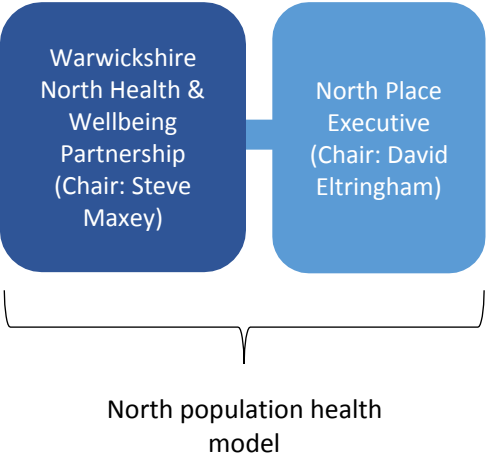


Key drivers: Health and Wellbeing Board Strategy, NHS Long Term Plan, Public Health Outcomes Framework, place-based JSNAs, COVID-19 HIA

North - Progress on Partnership priorities

Priorities	Outline of activity	Progress update
Access to services	<ul style="list-style-type: none"> MECC training in GEH Community capacity and rapid response Unscheduled care working group 	<ul style="list-style-type: none"> Meetings with GEH to coordinate training for front line staff Digital health rollout (DOCOBO / MySense), falls prevention project in roll out stage. GEH urgent treatment centre is not live with EDDI
Reducing health inequalities	<ul style="list-style-type: none"> Draft countywide tobacco control plan and CW partnership group established – priorities agreed for q2/q3 - review of the Warwickshire stop smoking service and implementation of the NHS LTP tobacco control priorities Quit 4 Good – Warwickshire Stop Smoking Service Mitigating impact of COVID funds across Warks Long Term conditions working group Mental Health working group Wider Determinants of health working group 	<ul style="list-style-type: none"> Draft countywide tobacco control plan drafted – priorities ensuring the countywide service is delivery stop smoking service as part of COVID-19 recovery, reviewing the service and NHS LTP plan priorities Warwickshire stop smoking service is currently being reviewed, potential to integrate into a new countywide lifestyle service by 2023 £325k funds made available to Warks population. C&W respiratory steering group support NW review of bid for post-COVID restoration. MH Officers liaison roll-out
Housing and health	<ul style="list-style-type: none"> Delivery of Countywide Homelessness Strategy which aims to enhance partnership working to prevent homelessness. Funding provided to deliver supported accommodation and prevention services in North Warwickshire and Nuneaton and Bedworth. Delivery of a housing liaison hospital discharge service to prevent delays caused by housing issues. 	<ul style="list-style-type: none"> Strategy agreed by partners, actions being delivered in all identified work streams by designated lead officers. These are Financial Inclusion, Domestic Abuse, Young People, Offenders and Health. Of particular note is the connection between the recently drafted Domestic Abuse Warwickshire Safe Accommodation Strategy and the Strategy. Both provide for robust partnership working. The hospital liaison service is now featured in the George Eliot Delivery Group as an important support for the hospital teams where housing issues are problematic to discharge
Reducing obesity and improving lifestyles	<ul style="list-style-type: none"> HEPP project working to review the (NCMP) C&W LTP prevention – Weight Management group reviewing the current pathways Fitter Futures contract to be redesigned. 	<ul style="list-style-type: none"> Working with Grapevine, we the project is engaging with the community to understand the barriers to access this service FF engagement with clinicians has triggered some immediate changes in the processes.

North - Governance Structures



North - Project SITREP

Community Capacity and Rapid Response	Long Term Conditions	Maternity, Children, and Young People	Mental Health	Unscheduled Care	Wider Determinants of Health
PBT Locality Hubs and MDT Working	Models of Care - Diabetes		Community Mental Health Transformation	Urgent Response Redesign	Models of Care - End of Life
D2A Review	Models of Care - COPD		Urgent and Acute Care	Think 111 First	Homeless Support
Falls Prevention	Models of Care - Heart Failure		Children and Young People	High Intensity Users	Smoking Cessation
Care Homes	Musculoskeletal Conditions (MSK)		Dementia Diagnosis Rate	Oximetry at Home	Obesity
Telehealth	Blood Pressure		Physical Checks for People with SMI	Pharmacy	Mental Health
Frailty - TBC			Suicide Prevention	Children – Asthma Surge	Learning Disability

In focus on following slides...

Key	
Complete / Business as Usual	1
On Track	18
Issues with Recovery Plan in Place	3
Issue with No Recovery Plan / Showstopper	0
Scoping	3
TBC	4
Total	29

Progress Since Last Report

- The Smoking Cessation and Obesity Programmes within the Wider Determinants of Health workstream have transition from 'amber' to 'on track'.
- An additional unscheduled care project around the children's asthma surge has been added.



Place executive

Priority view

Wider determinants of Health
extract from the Sept 2021 report

Wider Determinants of Health: Priority View				Vision: ‘Helping you to help yourself; there for you when you need us’			
Aim			SRO: Daljit Athwal		Lead Partners: SWFT OOH, PH, and CCG		Date: August 2021
To address health inequalities in Warwickshire North. There are four key areas: smoking cessation, obesity, mental health, and learning disabilities. Also, SWFT OOH are support EoL Models of Care.			Highlights and Achievements <ul style="list-style-type: none">Working with General Managers to implement ‘Make Every Contact Count’ (MECC) at George Eliot Hospital. This will cover smoking cessation, as well as other lifestyle and risk mitigating services.Children’s Obesity – continuing work with National Weighing programme.The Warwickshire North Place Delivery Group Benefits Tracker has been populated with information from smoking cessation and children’s obesity.			Warwickshire North Place Ambition <p>We will reduce the number of people smoking in more deprived area of WN to match the lower rates of those smoking in more affluent areas of WN.</p> <p>We will reduce the number of children in WN in Y6 who are overweight/obese to match those with lower rates in more affluent areas of WN.</p> <p>We will reduce the social isolation of people in WN who are disadvantaged by deprivation, unemployment, race, ill-health, and old age in WN.</p>	
Stakeholders and Partners							
WN Place Executive Group; Health Inequality Delivery Team; Local Authority; District and Borough Councils; General Practice; CWPT; Schools; and Hospices							
Key Enablers	Type of Impact (Tick)		Key Activities Due September Onwards			Success Measures	
<ul style="list-style-type: none">WorkforcePrimary Care Networks	Quality	✓	<ul style="list-style-type: none">A county-wide review of the smoking service to take place with Place-based priorities being addressed.There has been a rise in the number of BMI rates above 40 and 50. As part of the obesity programme this requires further investigation to understand the requirements for the pathway in community and hospital.			<p>The definition of inequality has been clearly outlined in the report based upon National recommendations. Local data on obesity rates for children in year 6 and smoking prevalence is available by Public Health England. Local data on the life expectancy of those with learning disabilities is available.</p> <p>Social isolation measure – increasing the number of adult social care users who report having as much social contact as they would like to that of the best performing West Midlands area.</p> <p>Primary Care – Learning Disability: percentage of those who received annual learning disability health check and a complete health action plan.</p>	
	Workforce						
	Financial	✓					
	Safety					Governance Structure	
			End of Life – WN Palliative Care Network Homeless Support – GEH TMB and WN Health and Social Care Board				
Link to National, System, and Place Strategic Objectives			Resourcing				
The diagnostic elements of the LD priority tie into the GEH/CCG Clinical Strategy. WN Place Executive agreed to include HI as a discrete workstream within the Place Programme in Aug 2020. The HI priorities were agreed by the JSNA, COVID-19 Impact Report, and WN H&WB Partnership Group. HI part of Phase 3 Pandemic Recovery. Links to Kings Fund (2018) Population Health.			<p>No funding is being requested for this health inequality work. Instead, the project will look to maximise use of existing resources.</p> <p>At PCN level, there is a discussion around roles moving forwards, e.g. a Dietician working with SWFT over next few months and a plan to employ Podiatrist and a Health and Wellbeing Coach.</p> <p>From a Local Authority perspective, Ruby Dillon and Paula Mawson are linked in to some of the projects around smoking cessation. Kate Sahota is linked to the Children’s Obesity programme of work. Alison Cole is linked to Learning Disability as Integrated Commissioner. Katie Herbert is linked across EoL as system project lead.</p>				

Place executive

Project view

Wider determinants of Health

extract from the Sept 2021 report

Wider Determinants of Health: Project View		Vision: 'Helping you to help yourself; there for you when you need us'			
Project	Latest Update	Next Milestone	Project Lead	Stage	
Smoking Cessation	Working with GEH ED and Medicines to implement MECC – meetings have been a little delayed with summer, but we are winning over the general managers and working on how to implement the service in GEH. MECC (Make Every Contact Count) will cover smoking as well as other lifestyles and risk mitigating services.	Sept 21 - set up working group . A county wide review of the smoking service is taking place with place-based priorities being addressed.	Yasser Din	On Track	
	Smoking in Pregnancy – link in with LMNS and look at the Governance for reporting. The development of a new model of provision. Baby Clear Model.		Jo Galloway	TBC	
Obesity	Children’s Obesity – the work is continuing to work with the national weighing programme to follow-up on the children that have been identified as overweight and who have not taken up the programme. Fitter futures have identified that NWB have a lower referral rate to FF in comparison to the rest of the country. There is a local gym service in NWB are managing patients with BMI of 40+. There is a rise in the number of BMI 40+ and 50+ post-lockdown is highly worrying and will spend some time to get my head around the full extent and understanding the pathway in community and hospital.	Sept 21 - develop an engagement strategy	Yasser Din	On Track	
	Obesity in Pregnancy – Local authority funding is increasing for this, especially in the North of the County where rates are higher. Jo Galloway is the lead for the LMNS.		Jo Galloway	TBC	
Mental Health	Social isolation – Carers week (7 th June) had promotion activities planned. Sharing of ideas with Compassionate Communities colleagues. Intro meetings held with Health Exchange, social prescribing service, and borough council colleagues. PCN Recruitment of Mental Health link workers and the mental health practitioners into PCN. One PCN has social prescriber dealing with social isolation by engaging with carers. Social prescribers across all 5 PCNs and there is an opportunity to expand this service.		Heather Kelly	On Track	
Learning Disability	Further dialogue with joint commissioners for LD/ASD. Attended system meeting with Michelle Cresswell and partners. Added LD to agenda for next Palliative Care Network meeting to review EoL action plan and LD. Learning Disability Assessment to Care in General Practice is part of the Quality Improvement for this year. There is a Learning Disability Improvement to Access Reviews workstream within General Practice.		Heather Kelly	On Track	
End of Life (Models of Care)	At April PE, the priorities were identified: OOH, Community Beds, Carer Support, EPaCCS, ReSPECT, Workforce Development, EoLC for people with Dementia, Managing Pain and Symptoms in the Community, Compassionate Communities, Care Homes, and EoLC for people with learning disabilities. Personalisation Anticipatory Care – future enhanced service in primary care.	Next milestone to be confirmed.	Theresa Bishop	On Track	
Homeless Support	Emily Fernandez in Public Health commissioned outreach and additional resource for Warwickshire North. The strategic vision and priorities have been identified. Draft comms plan is being developed with D&B comms teams.	Next Homelessness Strategic Meeting scheduled to meet for the 8 th September.	Emily Fernandez	On Track	
EQIA Assurance		Risk / Issue	Mitigation	Score	Status
EQIA for Mental Health and Learning Disability to be completed in July.		There are no risks or issues at present point (nil return)			

Rugby Place

1. Population health framework
2. Progress on priorities
3. In focus:
 - Children and young people's mental health
 - Homelessness



Warwickshire
Health and
Wellbeing



Rugby - Population Health Framework

Our long-term strategic ambitions:

People will lead a healthy and independent life.

People will be part of a strong community.

People will experience effective and sustainable services.

Place-based Health and Wellbeing Partnerships will work together to tackle health inequalities by addressing the wider determinants of health.

Health and social care commissioners and providers working together at our place-based Health and Care Executives to commission and deliver services.

The wider determinants of health

Our health behaviours and lifestyle

Aligning and coordinating prevention programs across the system and through each place-based Health and Wellbeing Partnerships to tackle barriers to healthy lifestyle choices.

An integrated health and care system

The places and communities we live in & with

Working together in our place based Health and Wellbeing Partnerships and with our communities to mobilise solutions informed by our understanding of local assets

Rugby Place priorities 2020/21

- Mental health and wellbeing – Self-harm in young people
- Poverty and inequalities – Homelessness
- Health behaviours – Smoking
- COVID-19 Recovery
- Long term conditions – heart failure



Key drivers: Health and Wellbeing Board Strategy, NHS Long Term Plan, Public Health Outcomes Framework, place-based JSNAs, COVID-19

Rugby - Progress on priorities

Priorities	Outline of activity	Progress update
Mental health and wellbeing – Self-harm in young people	<ul style="list-style-type: none"> • Refresh of suicide prevention strategy • Refresh of dementia strategy and arts initiative for those with dementia/carers • Promoted the RISE engagement/consultation • MH Needs assessment presented to the partnership for engagement and comments • Compassionate Communities Rugby launched 	<ul style="list-style-type: none"> • Planned late 2021 with partner involvement • Due Autumn 2021, arts initiatives launched July 2021 • Promotion of Kooth to Rugby Residents following discussions at the partnership. • Excellent feedback from young people on the service
Poverty and inequalities – Homelessness	<ul style="list-style-type: none"> • WCC's £200k investment into each D&B around homelessness 	<ul style="list-style-type: none"> • RBC pilot - BEAM is a social enterprise that targets support to transform the lives of people who are homeless or are at risk of being homeless by helping them to move from temporary accommodation into settled accommodation and access support to training and employment. Pilot project to support 50 service-users into employment, utilising funding already awarded to the Council, by Public Health, for this purpose. • Discussions started on the Poverty Proofing Pilot at the St Cross site.
Health behaviours – Smoking	<ul style="list-style-type: none"> • Draft countywide tobacco control plan and CW partnership group established – priorities agreed for q2/q3 - review of the Warwickshire stop smoking service and implementation of the NHS LTP tobacco control priorities • Quit 4 Good – Warwickshire Stop Smoking Service • NHS LTP prevention – tobacco control dependency programme 	<ul style="list-style-type: none"> • Draft countywide tobacco control plan drafted – priorities ensuring the countywide service is delivery stop smoking service as part of COVID-19 recovery, reviewing the service and NHS LTP plan priorities • Warwickshire stop smoking service is currently being reviewed, potential to integrate into a new countywide lifestyle service by 2023 • CW wide tobacco control group and steering groups have been working across the system with partners to lead and deliver on the LTP tobacco control priorities which aims to ensure all smokers admitted to hospital are offered stop smoking interventions by 2023 (acute/mental health) and pregnant women. • Smoking cessation is being incorporated into housing plans for people who are homeless and at risk of homelessness.
COVID-19 Recovery	<ul style="list-style-type: none"> • Partnership members have been the key leads in the Rugby COVID-19 weekly IMTs to manage COVID-19 response in Rugby 	<ul style="list-style-type: none"> • Rugby IMT's held bi-weekly
LTCs - heart failure	<ul style="list-style-type: none"> • Heart failure pathway 	<ul style="list-style-type: none"> • Deep dive of proposed pathway conducted and draft case for change discussed at Rugby Delivery Group. Further refinement of proposals ongoing

Rugby in focus – Children and Young People's Mental Health

What we're doing

- Drawing on anchor organisation opportunities in the partnership to deliver targeted engagement to key JSNA priority cohort
- Compassionate Communities being delivered in Rugby, enabled by Community Connections project
- Story Circles
 - direct engagement activity
 - training NHS, VCSE and LA staff in these skills HCP wide
- Promotion of mental health courses and services
 - available free, within programme; Long COVID; Cancer; LTC; Carers; COPD
- Listening Hours via GP / Social Prescriber – most relevant target locations

What we're learning

- Mental health impacts are continuing
- Generational differences
- Older people appreciated more time to connect with their own interests and lives – and some younger
- Younger people losing their prior interests
- People who are already in difficulty, became increasingly so
- Loss of motivation and interest in maintaining education
- People often don't want to come – then don't stop talking!



Rugby in focus – Children and Young People’s Mental Health

Compassionate Communities - what people are saying:

“Feedback from the meetings have shown how incredibly honest the students were about the mental health impacts they’d experienced, and the trust has been able to signpost them to external support.”

“It’s good to be listened to by an adult. We don’t get that much.”

“It’s changed the way we communicate as a team, there’s a deeper understanding and appreciation of what we’ve all been going through.”



<https://compassionaterugby.co.uk/>



Rugby in focus – Homelessness

Current progress

- Mapped out the VCS and NHS support to the sector
- Referral route for emergency dentistry agreed and being rolled out to partner agencies
- Clarification of the Virgin Healthcare contract and how equitable the offer is for Rugby
- Linking in with Warwickshire wide Homelessness Strategy Action Plan to identify fast place-based wins
- Clarifying potential routes to employment for the cohort

Linked initiatives being led by RBC, which will also involve the group

- PH funded opportunity for a social enterprise project(s) to assist the cohort into training and employment
- Rugby homelessness and rough sleepers strategy (links to the work of the delivery group have already been included in the draft)
- Rugby Financial inclusion policy – setting out a multi agency approach to tackling poverty issues in the borough
- Food Strategy for Warwickshire – leading on the food strategy workstream, which includes food security, community supermarkets, healthy eating and similar



South Place

1. Population health framework
2. Update on priorities
3. Enabling Activities and Next Steps
4. Examples of Communications



Warwickshire
Health and
Wellbeing



South - Population Health Framework

Our long-term strategic ambitions

People will lead a healthy and independent life.

People will be part of a strong community.

People will experience effective and sustainable services.

Place-based Health and Wellbeing Partnerships will work together to tackle health inequalities by addressing the wider determinants of health.

Health and social care commissioners and providers working together at our place-based Health and Care Executives to commission and deliver services.

The wider determinants of health

Our health behaviours and lifestyle

Aligning and coordinating prevention programs across the system and through each place-based Health and Wellbeing Partnerships to tackle barriers to healthy lifestyle choices.

An integrated health and care system

The places and communities we live in & with

Working together in our place based Health and Wellbeing Partnerships and with **our** communities to mobilise solutions informed by our understanding of local assets

Place Priorities

- Respiratory health and inequalities
- COVID19 recovery and prevention of illness
- Environment and sustainability
- Mental health, suicide and bereavement
- Children and young people



Key drivers: Health and Wellbeing Board Strategy, NHS Long Term Plan, Public Health Outcomes Framework, place-based JSNAs, COVID-19 HIA

South - Progress on priorities

Priorities	Outline of activity	Progress update
Respiratory health and inequalities	<p>Brief interventions implemented within SWFT</p> <p>Tobacco Control strategy in development by WCC</p> <p>SWFT Acceleration Plan</p> <p>Supporting people with Long Covid</p> <p>Place plan objective to improve pathway and outcomes for people with respiratory conditions</p>	<p>Peer support group at Brunswick hub</p> <p>Project SWOT analysis underway, speciality interviews across SWFT begin 6/9, Dr Allen (National Lead for GIRFT Respiratory and Covid) feeding back to Directors end September on performance data and conversations held with SWFT respiratory doctors</p>
COVID19 recovery and prevention of illness	<p>VCS support to promote pandemic control messages, including testing and vaccine uptake in priority areas</p> <p>Community transport support for vaccination programme</p> <p>Establish a Warwickshire Social prescribing network</p> <p>Undertake an Alcohol Needs Assessment</p> <p>Promotion of prevention and early intervention</p> <p>MECC and health champion work</p>	<p>Brunswick and Gap hubs supporting door knocking and drop-in “expert on tap” sessions to encourage vaccine uptake</p> <p>Open to all residents who require help to access vaccines</p> <p>Network established – WCC led</p> <p>HNA underway</p> <p>Strengthened via falls prevention work in SWFT place based team & launch of healthy ageing website</p> <p>Continued promotion of Wellbeing for Life campaign; SWFT targeting bronze award within 6 months. Planning specific ‘life on the ward’ wellbeing work</p> <p>Developed via Volunteering Matters contract – WCC led</p> <p>Overview of Covid-19 recovery survey findings shared for inclusion in recovery plans</p> <p>Stratford District Council COVID Recovery plan has enabled additional funding for CAB South Warwickshire Reach Out and Help Project (extended) and the funding to support the Refuge DA support worker</p>



South - Progress on priorities

Priorities	Outline of activity	Progress update
Environment and sustainability	Addressing poor air quality (links also to 1 st priority above) Promotion of active travel (links also to 1 st priority above)	Electric Bus scheme planned for Leamington. Electric bus park and ride proposed for Warwick/Leamington. Supplementary planning guidance signed off by HWB; Air Quality SPD adopted by WDC and in active use. LTC Transformation Framework process to be launched in late September. FHSF for LTC includes element for sustainable travel. Joint local plan process for SW started. WCC strategy shared with SWHWBD group – focus on joined up walking and cycling routes, & county parks. Green Spaces Strategy being implemented..1 st Phase of New country park being drafted at Bishops Tachbrook – serving circa 5k new homes; will also incorporate new foot/cycling routes to new secondary/primary schools. Planning application later this year. 2 other country parks being developed around Coventry Airport. Missing link in safer routes to school and in National Cycleway network in Warwick completed. Work underway on upgrading/extending national cycleway route form Leamington to Rugby/Southam. 25 acre new park opened on doorstep of 1100 new homes. Riverside Park being developed in Stratford.. Betterpoints Incentive scheme running.
	Promotion of warm and well (Act on Energy) and Green homes funding (links also to 1 st priority above) Climate emergency work (links also to 1 st priority above)	Update from Act on Energy at SWHWBD group to increase referrals 54 net zero carbon homes being built; 240 homes at new standard now committed; several Gov bids for decarbonising social housing successful.. DPD process for sustainable Buildings started. Stratford district council: Social Housing Decarbonisation Demo Project (SDC/Orbit) – 69 social units with poor EPC rating improved both in thermal comfort and carbon usage. LADs 1b/2 – Mobile homes retrofit insulation material and additional works to improve thermal comfort/EPC & reduce poor health associated with cold homes. HUGs Grant Programme emerging. Warwick district council: Social Housing Decarbonisation Demo Project – 50 whole house retrofits. LADS 1b – 40 air source heat pumps (ASHP) and 25 solar photovoltaic (PV) systems to be installed January – September 2021 (extension to December 2021 requested). LADS 2 – 118 solar PV, 20 ASHP, 25 loft insulations (across 163 properties) to be installed July to December 2021. HUGs Grant Programme/LAD3 – due for delivery December 2021 – March 2023 Climate change workshop delivered at SWHWB delivery group, green shoots funding promoted, promoting local shops/town use/Totally Locally concept. Agreed to develop a South Warks Climate Emergency Action Programme
	Supporting the range of VCS led ecotherapy initiatives across SW	Schemes in place – WWF, ARC and CIC supported through local grants and tailored offers to meet needs of those with SMI

South - Progress on priorities

Priorities	Outline of activity	Progress update
Mental health, suicide and bereavement	<p>Engagement with arts and culture to promote wellbeing</p> <p>Support the VC sector to support people with mental health difficulties</p> <p>Refresh of suicide prevention strategy</p> <p>Increasing skills and knowledge across the patch to identify and respond to suicide risks</p> <p>Refresh of dementia strategy and arts initiative for those with dementia/carers</p> <p>Undertake a Mental Health Needs Assessment</p> <p>Undertake a Domestic Abuse Needs Assessment</p> <p>CWPT Access Hubs and Community Transformation Programme</p> <p>Support the long-term wellbeing of our workforces</p>	<p>WCC commissioned arts and health initiatives across the life course (implementation throughout 2021)</p> <p>Joint grants programme with CCG/WCC and DC 19/20 and promotion of resilience funding to partners</p> <p>Planned late 2021 with partner involvement</p> <p>Collaboration with partners to promote suicide prevention training</p> <p>Due Autumn 2021, arts initiatives launched July 2021</p> <p>Mental Health Needs Assessment published</p> <p>Domestic Abuse Needs Assessment complete, recommendations are being finalised</p> <p>3 access hubs now up and running, including St Michaels for South, for all telephone mental health referrals. Phase 2 will include other forms of contact. Ambitious Community Transformation Programme in place, which offers a system wide mental health offer for people with Serious Mental Illness and includes workstreams for Eating Disorders, Personality and Complex Trauma and Rehabilitation</p> <p>All partners committed to delivering the Thrive at Work programme accreditation; staff health and wellbeing needs assessment underway</p> <p>Stratford District Council: recent round of mental health grants to support young people experiencing pandemic related mental health challenges</p>
Children and young people	<p>Support development of community hubs (Ellen Badger, Jubilee Centre, Brunswick Hub, St. Johns)</p> <p>Grants to support young peoples health and wellbeing</p> <p>Improved access to bereavement support for children by cancel</p> <p>Tackling Social Inequalities Strategy</p>	<p>Community survey completed for Ellen Badger (Healthwatch) - Stour Health and Wellbeing Partnership</p> <p>liaising with SWFT to influence Ellen Badger developments.</p> <p>Grants provided to community hubs (WDC) and seed funded projects by WCC 19/20</p> <p>Coventry and Warwickshire Child Bereavement Partnership Group chaired by SWFT & working with the VCS</p> <p>Due to go to cabinet on 14th Oct 2021 for sign off; some projects already in delivery including Poverty Proofing Project and recruitment for dedicated WCC Family Information Service staff</p>

The newly created 25 acre Myton Green Park was handed over to Warwick District Council and the people of Warwick in December 2020; this video shows what the new play facilities mean to local children: [CLICK HERE](#)



South Place Enabling Activities and Next Steps

Building relationships across partners through events such as the LGA workshop and identifying our collective gives, gets and asks

Bringing our strategy to life through communicating to the public and our partners through newsletters, the creation of a new communications group and our website (see examples on next slide)

Using the recommendations from our recent audit to build a roadmap to a mature place operating model, including bringing together our governance models to support our collaborative approach to delivery (i.e. merging HCF and Place Partnership Board)

By the end of the financial year, create a four-quadrant plan bringing together the priorities from the Health and Wellbeing Strategy, JNSA and Place Plan to demonstrate how we in South Warwickshire will improve our population's health and wellbeing

Deliver additional activities to enable us to deliver our priorities by reducing inequalities in health outcomes and the wider determinants of health

- Homelessness Strategy launched
- Ongoing partnership support to the Fred Winter Centre – this scheme is almost complete and nominations are due to start moving in during October
- Digital inclusion pilot for refurbishing donated laptops - 34 applications received so far of which 21 met criteria and were approved. There is plenty of equipment available and the referral scheme would benefit from further promotion



South Place Communication

MEETINGS AND PAPERS KEY PROJECTS LATEST NEWS BECOME A COMMUNITY PARTNER

Health & Care in South Warwickshire

The NHS and Local Government nationally is starting to work differently, with a closer focus on local communities and making sure all health and local government services work together to help prevent ill health and to meet the unique needs of their populations.

South Warwickshire Together is organisations working collaboratively to provide these services:

- Warwickshire County Council
- Warwick District Council
- Stratford District Council
- South Warwickshire Foundation Trust
- South Warwickshire Primary Care provider
- Healthwatch Warwickshire
- Community and Voluntary Action
- Coventry and Warwickshire Partnership NHS Trust
- Coventry and Warwickshire CCG
- Voluntary services in Warwickshire

We use local data that has been gathered from the Joint Strategic Needs Assessment (JSNA) to provide the right services for our populations. JSNA data looks at the current and future health, care and wellbeing needs of residents in South Warwickshire to inform and guide the planning and commissioning of health, wellbeing and social care services. For more information on South Warwickshire's JSNA data [click here](#).

To find out more about what South Warwickshire Together is doing to improving the population's health and wellbeing and understand how partners are going to work together [click here](#).



What will be happening in South Warwickshire?

Within South Warwickshire we will be focusing on the following areas to improve the health and wellbeing of our local communities over the next two years. These will be reviewed for progress and updated appropriately.



Heathy People

- Support the long-term wellbeing of our workforces
- Improve the physical health of people with mental ill-health
- Improving uptake of prevention measures among marginalised groups (e.g. screening and immunisations) to support health equality with an immediate focus on vaccinations
- Embed approaches to prevention and health promotion across organisations in South Warwickshire Place



Making Care Better

- Improve outcomes for patients with respiratory conditions to reduce the inequalities with other places
- Improve outcomes for families with disabled children and mental health conditions
- Improve outcomes for patients with drug and alcohol related conditions and health needs



Right Care in the Right Place

- Improve quality of life for people living with dementia and their carers, through earlier identification and support
- Build on existing integrated-working successes to keep people at home for longer
- Review existing integrated arrangements for Homefirst and Discharge to Assess (D2A) to improve outcomes for our population
- Focus on Continuing Health Care to increase efficiencies and improve health outcomes
- Redesign urgent care across South Warwickshire to deliver improved outcomes and drive improvements and efficiencies



South Warwickshire's journey to improving the population's health and wellbeing

The NHS and Local Government nationally is starting to work differently, with a closer focus on local communities and making sure all health and local government services work together to help prevent ill health and to meet the unique needs of their populations.

To support this new way of working Integrated Care Systems (ICS) have been introduced. These are partnerships between NHS organisations and local authorities, covering a specific geographical area. Together all partners within the system will plan health and care services to meet the needs of their population.

All parts of England are now covered by one of 42 Integrated Care Systems and we operate with the Coventry and Warwickshire Health and Care Partnership.



Here in South Warwickshire we are really excited to be working more closely with our partners to develop services and address local health problems in a joined up approach.

To support this more localised approach to health and social care, organisations and specific teams will be operating as a Place.

The following organisations are working collaboratively to make up South Warwickshire Place:

- Warwickshire County Council
- Warwick District Council
- Stratford District Council
- South Warwickshire NHS Foundation Trust
- South Warwickshire Primary Care provider
- Healthwatch Warwickshire
- Community and Voluntary Action
- Coventry and Warwickshire Partnership NHS Trust
- Coventry and Warwickshire Clinical Commissioning Group

South Warwickshire Place will still get support from Coventry and Warwickshire's Health and Care Partnership, but the actual arrangements between local authorities, the NHS, and other providers of health and care services will be left to local organisations within South Warwickshire to decide. This local flexibility will be really important.

SYSTEM:

- Coventry and Warwickshire Health and Care Partnership covers just over 1.1million people
- Set and lead the overall strategy
- Manage collective resources and performance
- Share best practice to reduce variations in care
- Lead large scale changes

PLACE:

- Town/districts within the Integrated Care System – often a council/borough
- South Warwickshire covers the whole of Stratford and Warwick District Council areas
- 275,000 people growing to 300,000 over the next few years
- Majority of clinical service changes will be designed and delivered here
- Providers will work together to join up services and to help improve health by increasing prevention

NEIGHBOURHOOD:

- Small area – within South Warwickshire there are 7 Primary Care Networks (PCN) and 8 Joint Strategic Needs Assessment (JSNA) areas
- Covers 30-50,000 people
- Groups of GPs and community services work together to deliver care
- Specific work will take place in neighbourhood areas to support prevention



South Place Communication



South Warwickshire Together

Supporting the health and wellbeing of our local communities by improving estates and outdoor spaces across South Warwickshire

In South Warwickshire partners are working together to develop an estates plan which will ensure services are delivered in the right place, whether that be in homes, specialist medical settings or the high street. Close working between organisations enables us to make the best use of all of our buildings and respond in the most effective way to the unique needs of our population.

OUR COMMITMENTS
To support this all partners are committed to;

- Reduce carbon emissions ✓
- Agile working ✓
- Reduce financial cost of estate through efficiencies ✓
- Improve buildings and increase affordable houses ✓

These objectives will be achieved through working collaboratively and developing an overarching Local Plan for Stratford and Warwickshire. By embedding the resilient and flexible culture that all partners adopted during COVID-19, we will work together to deliver health and care services in an effective, compassionate and timely manner.

Leaning from the pandemic
COVID-19 created many challenges and our teams have faced unpredictable scenarios forcing them to work differently. Despite this though we have seen great commitment, flexibility and trust from all partners which has enabled us to maintain services and develop innovative solutions, including;

- Quick adoption of new technology in response to national social distancing guidelines. The way in which partners have embraced digital solutions has been a key enabler to partnership working and driven innovations in the way in services have been delivered.
- Development of South Warwickshire's COVID-19 vaccination hubs was achieved through the joined up working and commitment of all partners from identifying appropriate locations, finding IT solutions and developing a robust workforce plan.
- Throughout the pandemic South Warwickshire has also progressed on some really exciting projects including: the completion of the new Priory Medical Centre and the approval of an expansion of Waterside Medical Centre and approval for improvements to Croft and Budbrooke Medical Centres.

Voluntary services in Warwickshire

www.southwarwickshiretogether.com

JULY 2021 UPDATE

Some of the estates projects partners are working on together...

PROPOSAL FOR A NEW HEALTHCARE FACILITY IN LILLINGTON
This exciting project is the ambition of creating a new low or zero carbon healthcare facility that will include primary care services alongside a range of community health teams such as district nurses, Speech and Language Therapy, Consultant Led Paediatric Services and Community Dental. This new centre will be able to better serve the local community and will support the delivery of modern healthcare – including accessibility, the infrastructure needed to support developments in the use of Information Technology, and the ability to cope with greater demand for services as the local population increases.

EMBEDDING AGILE WORKING ACROSS SOUTH WARWICKSHIRE
Explore opportunities to consolidate various estates by adopting a hybrid model of working from home and the ability for bookable spaces, accessible for all health and local government partners.

STRATFORD TOWN CENTRE AND LEAMINGTON TOWN CENTRE
Planning work is underway in areas of major population growth and in Stratford and Leamington Town Centres, where working with health and community partners and our local population we are reviewing our buildings and how we use them.

DEVELOPING A SOUTH WARWICKSHIRE SUSTAINABILITY MODEL
To support the Greener NHS Programme and NetZero Targets, partners will work together to reduce our carbon footprint. This will be achieved through utilising technology, embedding agile working solutions and maximising shared spaces.

DEVELOPMENT OF SHIPSTON MEDICAL CENTRE AND ELLEN BADGER HOSPITAL
This joint development will achieve an integrated healthcare hub for Shipston and the surrounding villages. There will be a range of facilities available on the site and enhanced clinical spaces for hospital, community and primary care services. As part of the first phase of the project, a Health and Wellbeing Centre will be developed, which will support the health and wellbeing needs of the community. This modern healthcare facility will be leading the way nationally with lots of future opportunities.

Many other estates projects are also being explored and we will continue to engage with local GP practices and wider health, care and local government partners to identify areas where we can work together to support our local population.

www.southwarwickshiretogether.com

